

100-16104,-D 14 Volts 200 Amps

PRODUCT SPECIFICATIONS

Part number	100-16104
System Voltage	12V
Rated Output	200A
Output @ 2000 rpm	116A
Ground	Isolated
Mounting	J180 4" Hinge
Rotation	CW
Temperature limits:	
Low	-40°C / -40°F
High	110°C / 230°F
High	125°C / 257°F (with fresh air intake)
Speed limits:	8000 RPM continuous 9000 RPM intermittent
Coating	Corrosion-Resistant E-Coated
Weight	28 Lbs / 12.7 Kg.
Regulator	Remote

100-16104



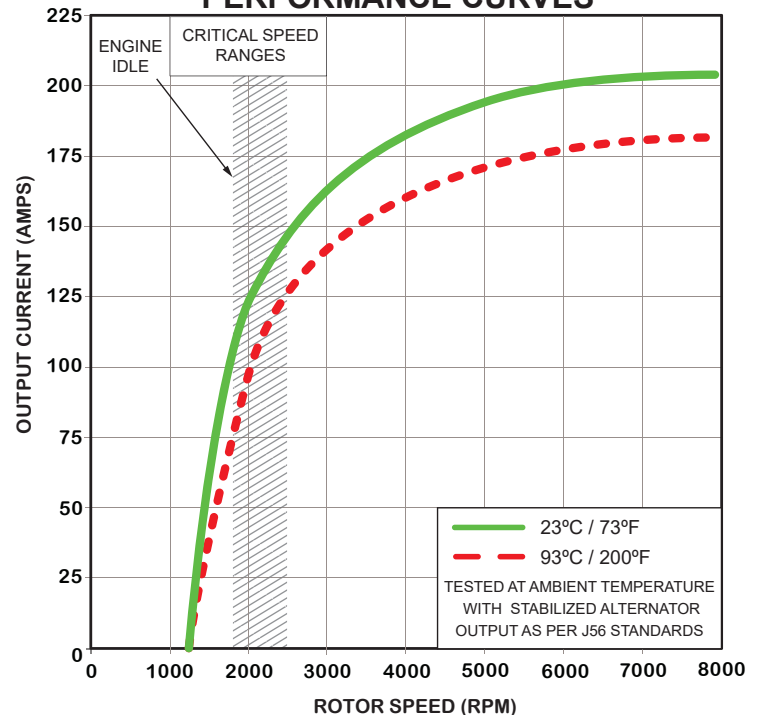
100-16104-D
with air intake cover



NOTE:

This DelStar 100-16104 alternator, meets the marine requirements for Ignition Protection on gas or diesel engines of ISO 8846, USCG, stated in Title 33 CFR 183.410, SAE J1171 and International CE Standards.

PERFORMANCE CURVES

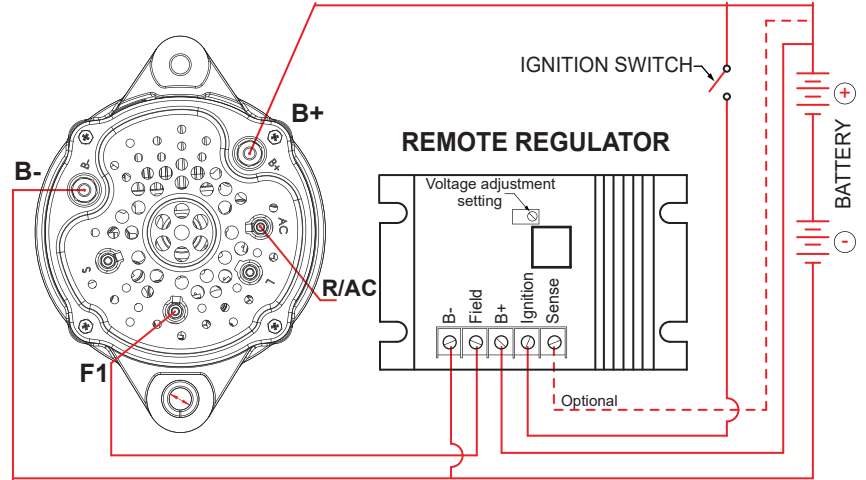
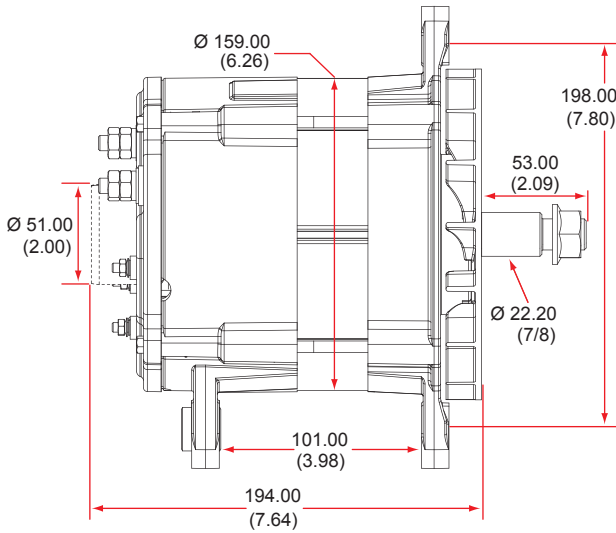


RECOMMENDED FOR:

- School & Shuttle Buses
- Utility Vehicles
- Marine & Mining
- Agricultural
- Construction & Industrial

OUTLINE

CONNECTIONS



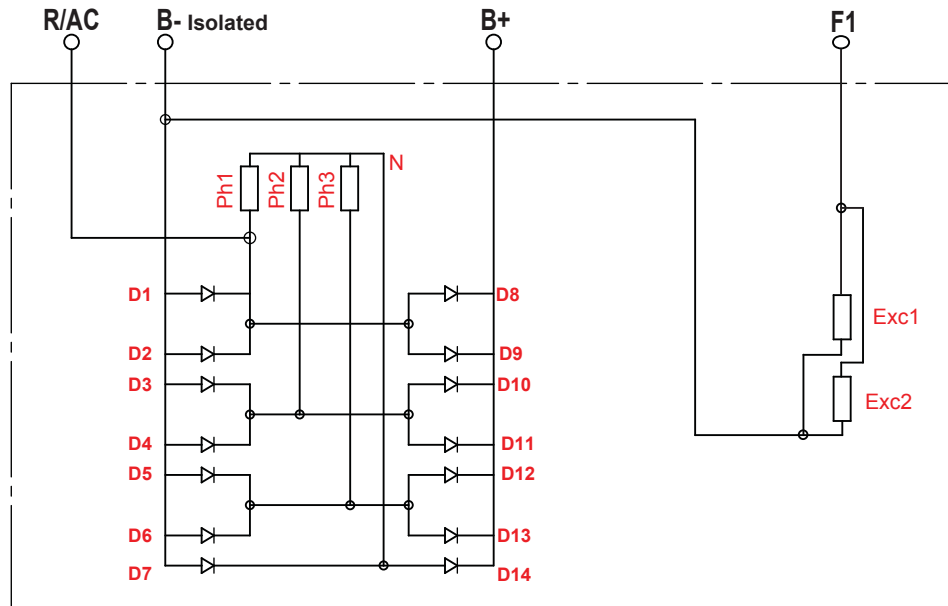
Dimensions are listed in mm over (in)

If the vehicle has an ignition (excite) circuit, connect wire to "D" (dummy) terminal.

100-16104

14 Volts 200 Amps

ELECTRICAL SCHEMATIC



D100-16104 - 151112 - Rev. 180405

CANADA & EXPORT SALES

Dixie Electric Ltd. Tel.: 905-879-0533 800-461-5799
 517 Basaltic Road Fax: 905-879-0532
 Concord, ON. E-Mail: sales@dixie-electric.com
 Canada L4K 4W8 Web Site: www.dixie-electric.com



U.S.A. SALES

Dixie Electric Inc. 17100 Medina Rd, Suite 100
 Minneapolis, MN. U.S.A. 55447-1249

Tel.: 763-475-6629 800-478-0608
 Fax: 763-475-6635 800-392-8719
 E-Mail: mn.sales@dixie-electric.com
 Web Site: www.dixie-electric.us