

DelStar®

HD Brushless

Series 180

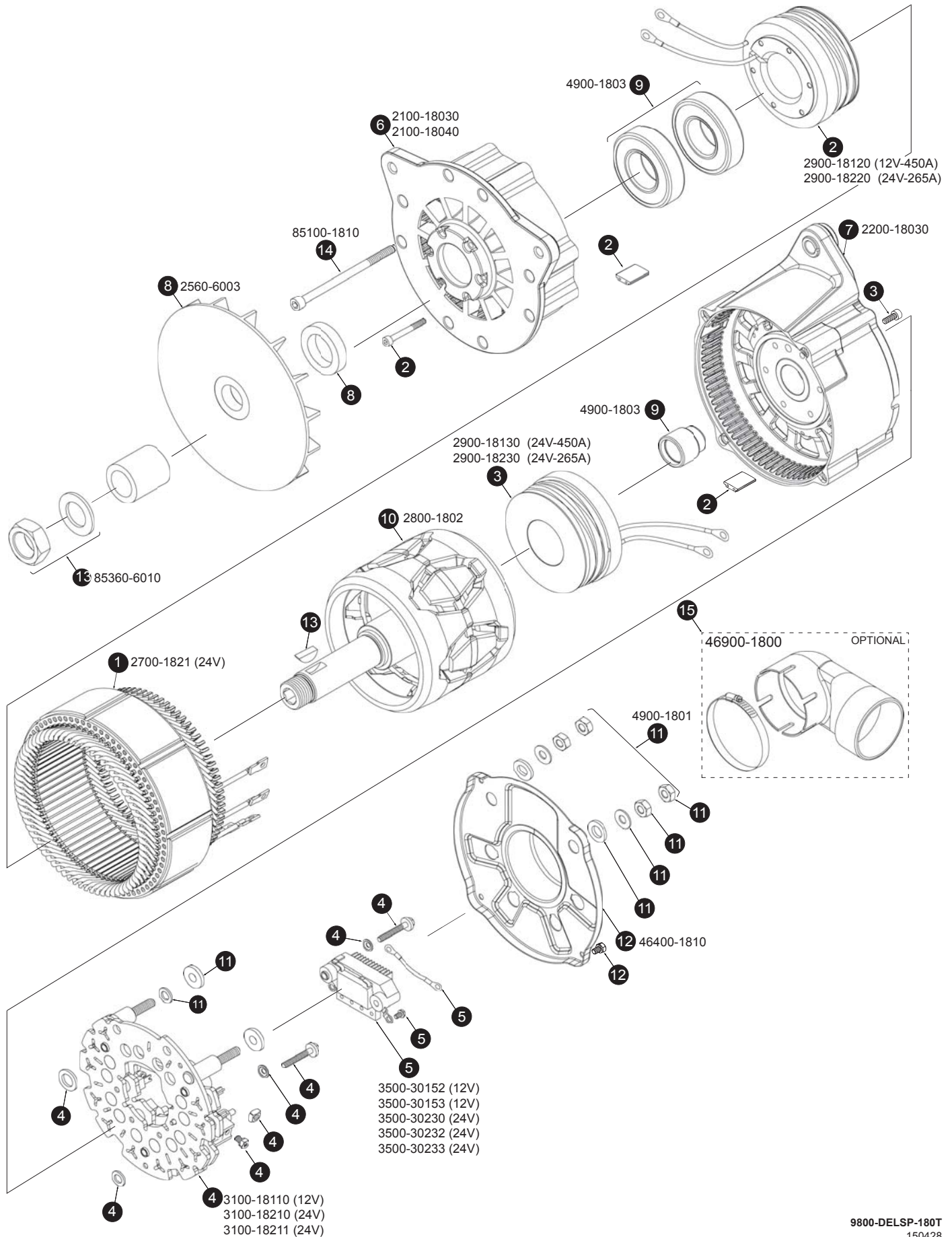
SERVICE PARTS

EXPLODED VIEW
for 7" Hinge - T1 Mount







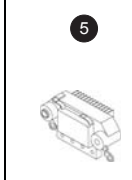
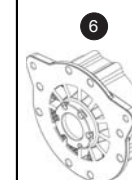
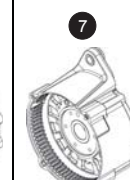


Series 180

9800-DELS-180T
150428



MAJOR COMPONENTS

										
MODEL No.	V-Amp @ 2000 / 5000 RPM	STATOR ASSY.	FRONT COIL PKG.	REAR COIL PKG.	RECTIFIER PKG.	REGULATOR	FRONT HOUSING ASSY. <small>Includes Bearings</small>	REAR HOUSING ASSY. <small>Includes Bearing</small>		
100-18121	12V-270 / 450A	2700-1811	2900-18120	2900-18130	3100-18110	3500-30152 3500-30153	2100-18030	2200-18030		
100-18122	12V-270 / 450A	2700-1811	2900-18120	2900-18130	3100-18110	3500-30152 3500-30153	2100-18030	2200-18030		
100-18223	24V-165 / 265A	2700-1821	2900-18220	2900-18230	3100-18210	3500-30230 *	2100-18030	2200-18030		
					3100-18211	3500-30232 3500-30233				
100-18224	24V-165 / 265A	2700-1821	2900-18220	2900-18230	3100-18210	3500-30230 *	2100-18030	2200-18030		
					3100-18211	3500-30232 3500-30233				
100-18227	24V-165 / 265A	2700-1821	2900-18220	2900-18230	3100-18211	3500-30232 3500-30233	2100-18030	2200-18030		
100-18228	24V-165 / 265A	2700-1821	2900-18220	2900-18230	3100-18210	3500-30230 *	2100-18030	2200-18030		
					3100-18211	3500-30232 3500-30233				
100-18230	24V-165 / 265A	2700-1821	2900-18220	2900-18230	3100-18210	3500-30230 *	2100-18040	2200-18030		
					3100-18211	3500-30232 3500-30233				
100-18232	24V-165 / 265A	2700-1821	2900-18220	2900-18230	3100-18211	3500-30232 3500-30233	2100-18040	2200-18030		

* 3500-30230 Used w/ 3100-18210 (Diode Trio type Rectifier)

ITEM	PART No.	DESCRIPTION
1	2700-1811	STATOR ASSY. 180 (12V-450A)
1	2700-1821	STATOR ASSY. 180 (24V-265A)
2	2900-18120	COIL PKG., 180 Front (12V-450A)
2	2900-18220	COIL PKG., 180 Front (24V-265A)
3	2900-18130	COIL PKG., 180 Rear (12V-450A)
3	2900-18230	COIL PKG., 180 Rear (24V-265A)
4	3100-18110	RECTIFIER PKG. 180 12V
4	3100-18210	RECTIFIER PKG. 180 24V,w/Diode Trio
4	3100-18211	RECTIFIER PKG. 180 24V
5	3500-30152	V. REGULATOR PKG., 14.2 V. Set
5	3500-30153	V. REGULATOR PKG., 14.2 V. Set (Adjustable)
5	3500-30230	V. REG. PKG., Used w/ Diode Trio type Rectifier
5	3500-30232	V. REGULATOR PKG., 28 V. Set
5	3500-30233	V. REGULATOR PKG., 28 V. Set (Adjustable)

ITEM	PART No.	DESCRIPTION
6	2100-18030	HOUSING ASSY., 180 Front-T1.,M12 x 2 Threaded sides
6	2100-18040	HOUSING ASSY., 180 Front-T1.,M12 & 12.5mm Ø hole
7	2200-18030	HOUSING ASSY., 180 Rear-T1
8	2560-6003	FAN, 180 T1 (Bi-directional)
9	4900-1803	BEARINGS KIT. T1,180 Series (Includes bearing inner race)
10	2800-1802	ROTOR ASSY., 180 30.0mm Ø shaft
11	4900-1801	HARDWARE PKG.
12	46400-1810	COVER PLATE PKG., 180 with 2.75" Ø air intake
13	85360-6010	PULLEY NUT PKG., (M27 X 1.5 Thread)
14	85100-1810	THRU-BOLT PKG. (M7 X 1.0 X 114mm L)
15	46900-1800	ELBOW PKG., (360° Rotatable for Air Intake Cover)

**Corporate Headquarters
Manufacturing and Distribution**

Dixie Electric Ltd.
517 Basaltic Road
Concord, ON. Canada L4K 4W8
Tel.: 905-879-0533 Fax: 905-879-0532
U.S. 800-563-3933
E-Mail: sales@dixie-electric.com
Web Site: www.dixie-electric.com



**USA
Sales and Distribution**

Dixie Electric Inc.
17100 Medina Road, Suite 100
Minneapolis, MN. U.S.A. 55447-1249
Tel.: 763-475-6629 800-478-0608
Fax: 763-475-6635 800-392-8719
E-Mail: mn.sales@dixie-electric.com
Web Site: www.dixie-electric.com