

100-16114,-D

14 Volts 215 Amps

PRODUCT SPECIFICATIONS

Part number	100-16114
System Voltage	12V
Rated Output	215A
Output @ 2000 rpm	121A
Ground	Negative
Mounting	PAD
Rotation	CW
Temperature limits:	
Low	-40°C / -40°F
High	110°C / 230°F
High	125°C / 257°F (with fresh air intake)
Speed limits:	
	8000 RPM continuous
	9000 RPM intermittent
Coating	Corrosion-Resistant E-Coated
Weight	28 Lbs / 12.7 Kg.
Regulator	Integral
Excitation	Self-excite (@ 1500 rpm or less)
Indicator Light	Yes
Remote Sense	Yes
Soft Start Delay (SSD)	Yes
Field Short Circuit Protection	Yes
Load Dump Protection	Yes
Overvoltage Shut-Down (OSD)	Yes

RECOMMENDED FOR:

- School & Shuttle Buses
- Utility Vehicles
- Marine & Mining
- Agricultural
- Construction & Industrial



100-16114



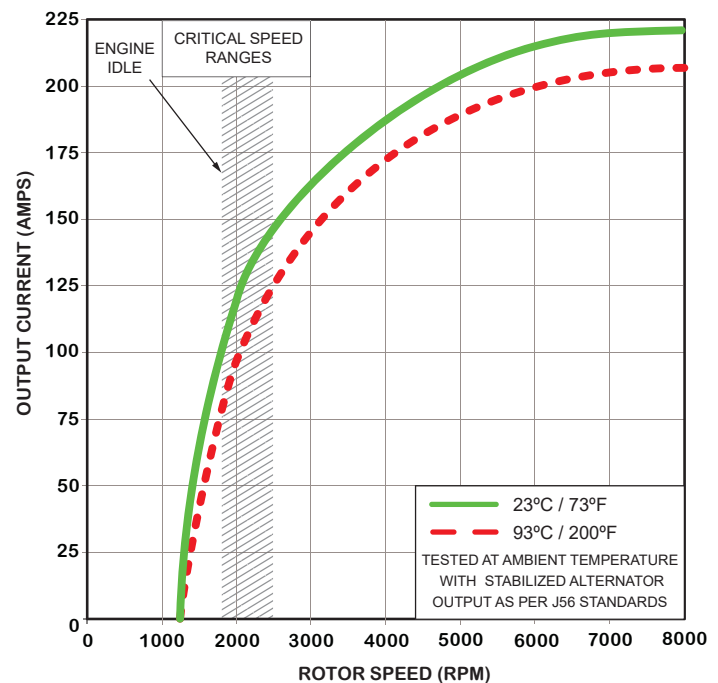
100-16114-D

with air intake cover

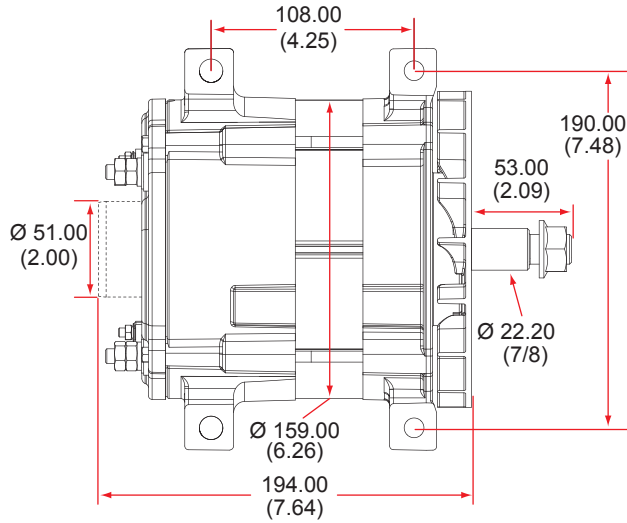
NOTE:

This DelStar 100-16114 alternator, meets the marine requirements for Ignition Protection on gas or diesel engines of ISO 8846, USCG, stated in Title 33 CFR 183.410, SAE J1171 and International CE Standards.

PERFORMANCE CURVES

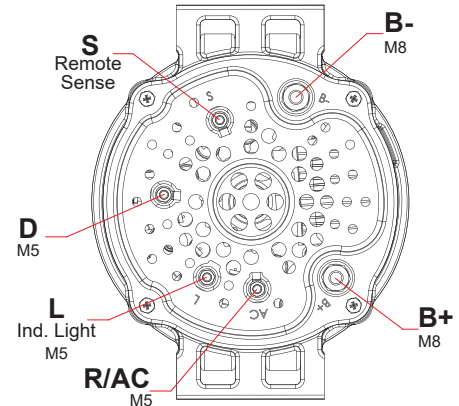


OUTLINE



Dimensions are listed in mm over (in)

CONNECTIONS

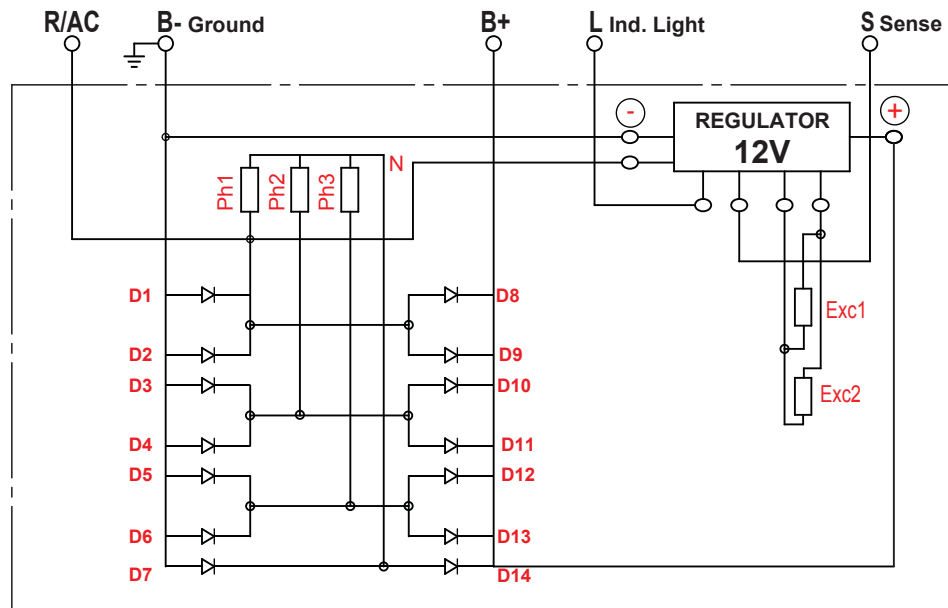


If the vehicle has an ignition (excite) circuit, connect wire to "D" (dummy) terminal.

100-16114

14 Volts 215 Amps

ELECTRICAL SCHEMATIC



D100-16114 - 210225

CANADA & EXPORT SALES

Dixie Electric Ltd. Tel.: 905-879-0533 800-461-5799
 517 Basaltic Road Fax: 905-879-0532
 Concord, ON. E-Mail: sales@dixie-electric.com
 Canada L4K 4W8 Web Site: www.dixie-electric.com



U.S.A. SALES

Dixie Electric Inc. Tel.: 763-475-6629 800-478-0608
 5600 Pioneer Creek Drive, Suite D Fax: 763-475-6635 800-392-8719
 Maple Plain, MN 55359 E-Mail: mn.sales@dixie-electric.com
 U.S.A. Web Site: www.dixie-electric.us